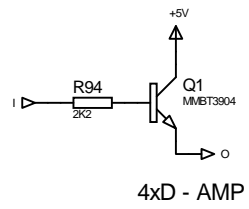


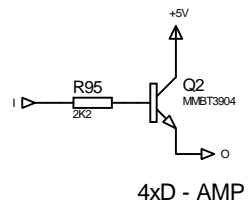
FB-SEND sockets are wired directly to OUT sockets, not connected via PCB.
FB-RETURN sockets are wired directly to the FEEDBACK pots, not connected via PCB
Ground connections for the FB sockets can be taken from the IN sockets

IN sockets are normalised to connect to previous IN socket if no jack inserted
FB-RETURN sockets are normalised to connect to FB-SEND sockets if no jack inserted

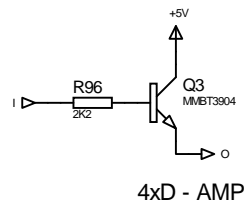
4xD - TOP LEVEL



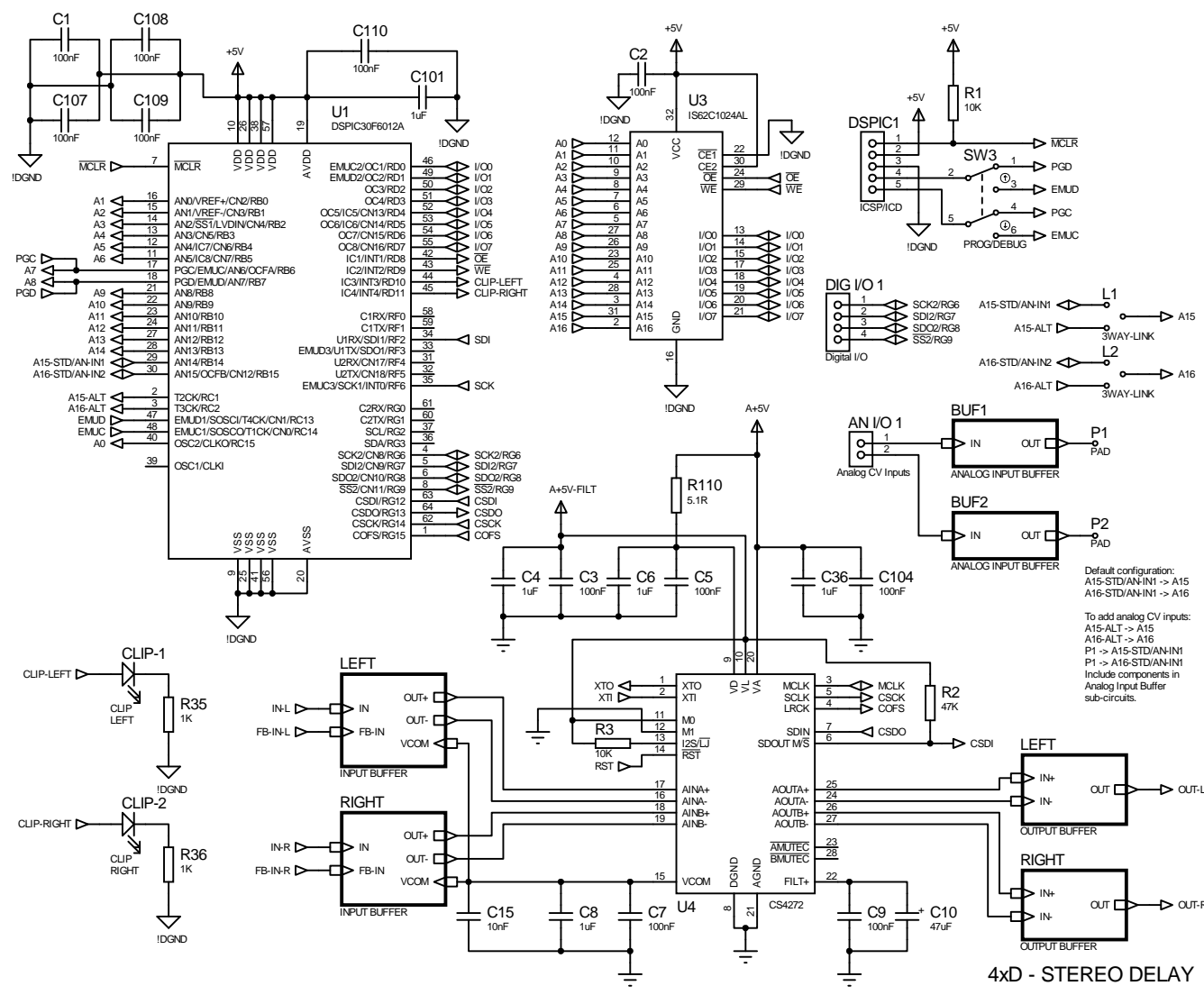
4xD - AMP

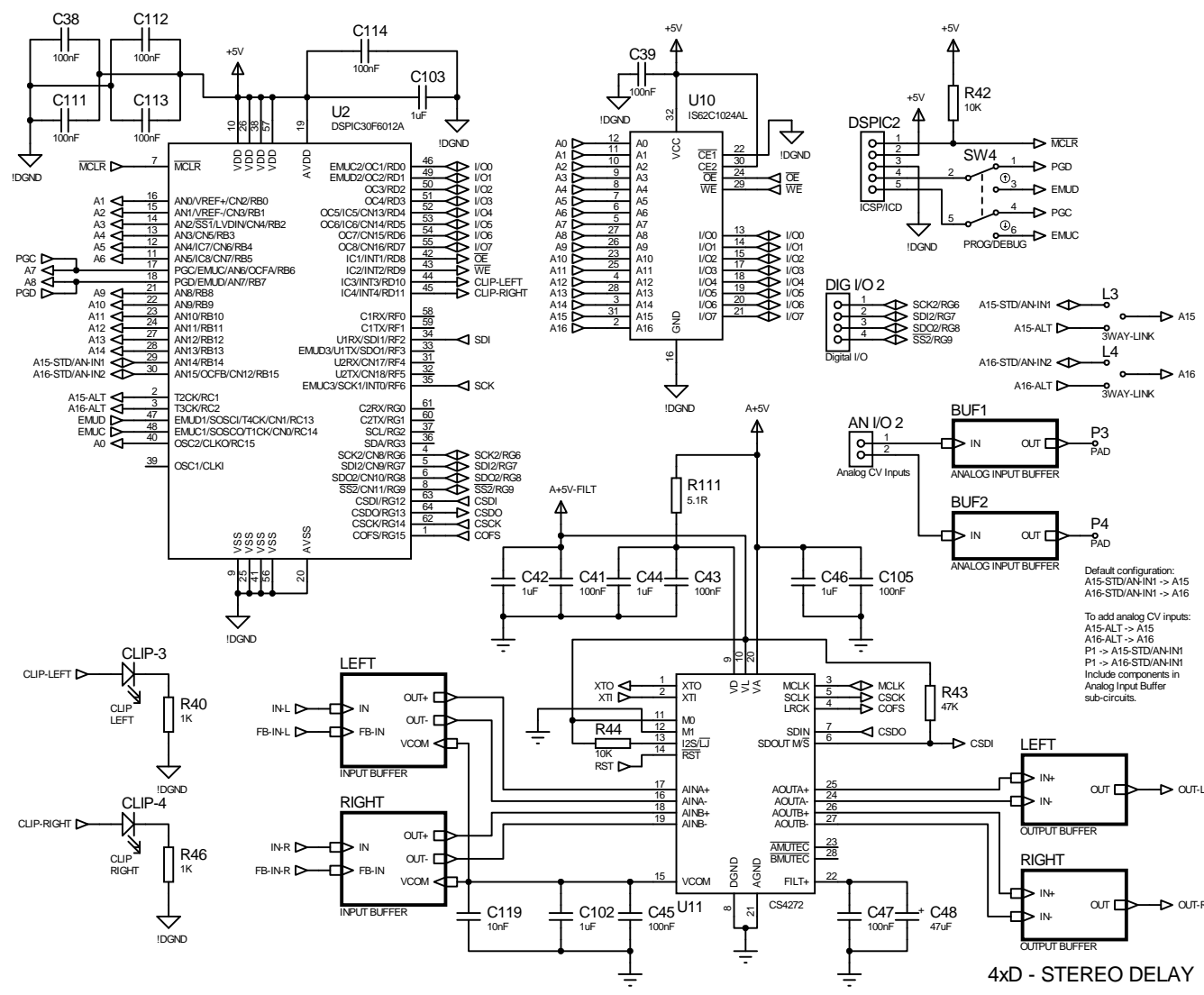


4xD - AMP



4xD - AMP

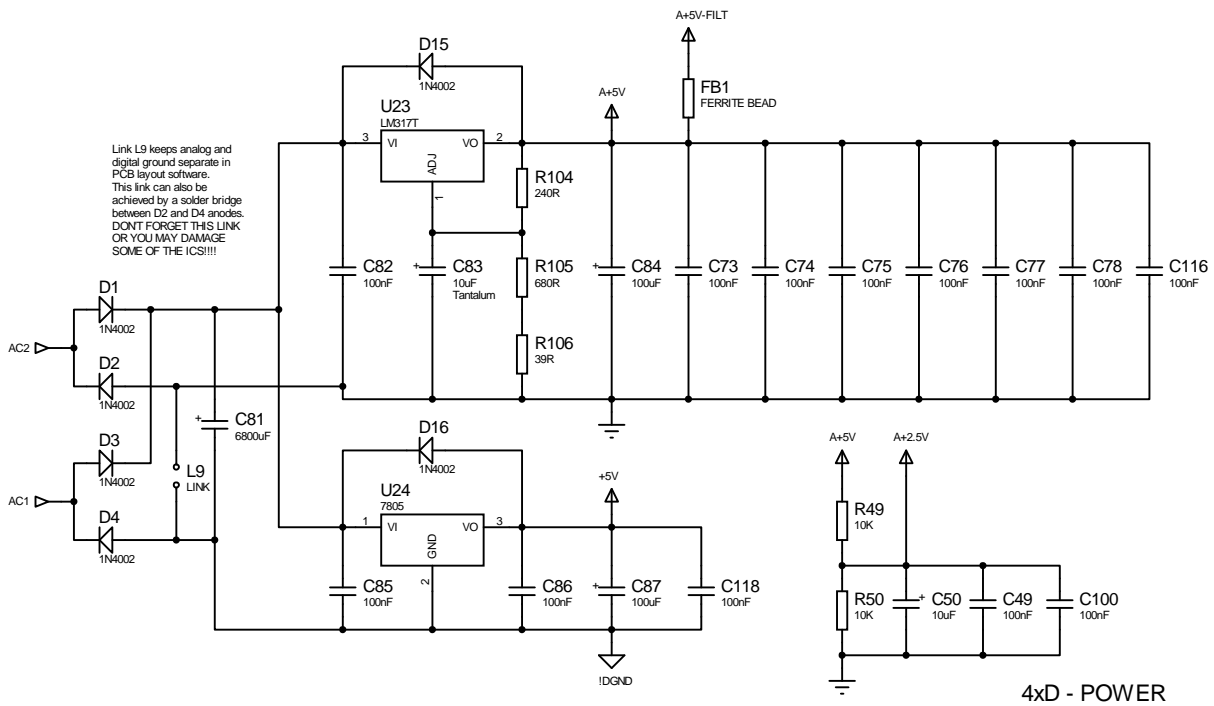


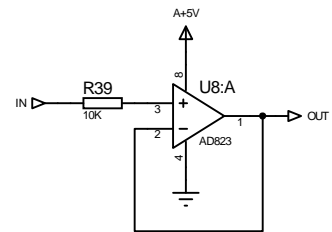


Default configuration:
 A15-STD/AN-IN1 -> A15
 A16-STD/AN-IN1 -> A16

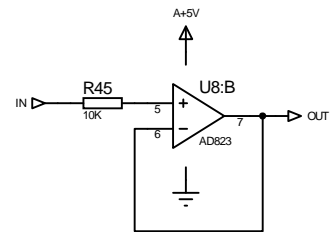
To add analog CV inputs:
 A15-ALT -> A15
 A16-ALT -> A16
 P1 -> A15-STD/AN-IN1
 Include components in Analog Input Buffer sub-circuits.

4x D - STEREO DELAY

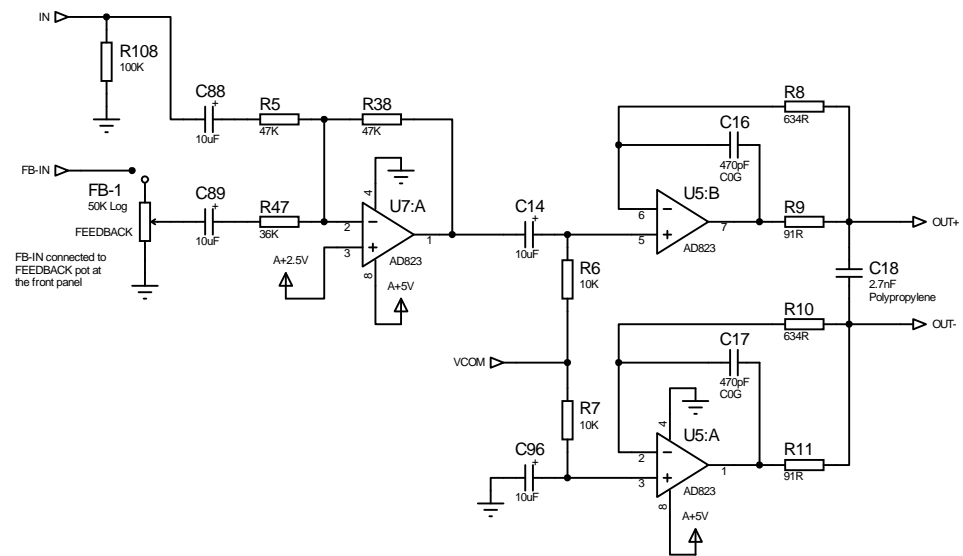




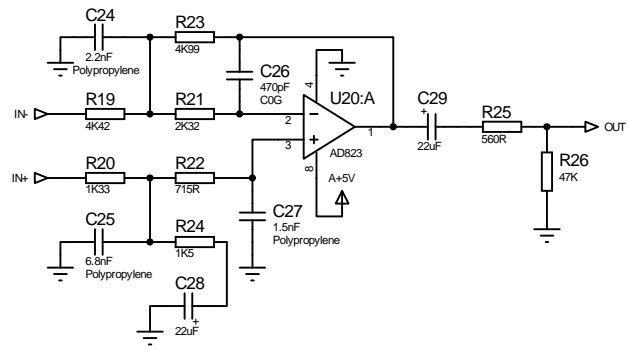
4xD - ANALOG INPUT BUFFER



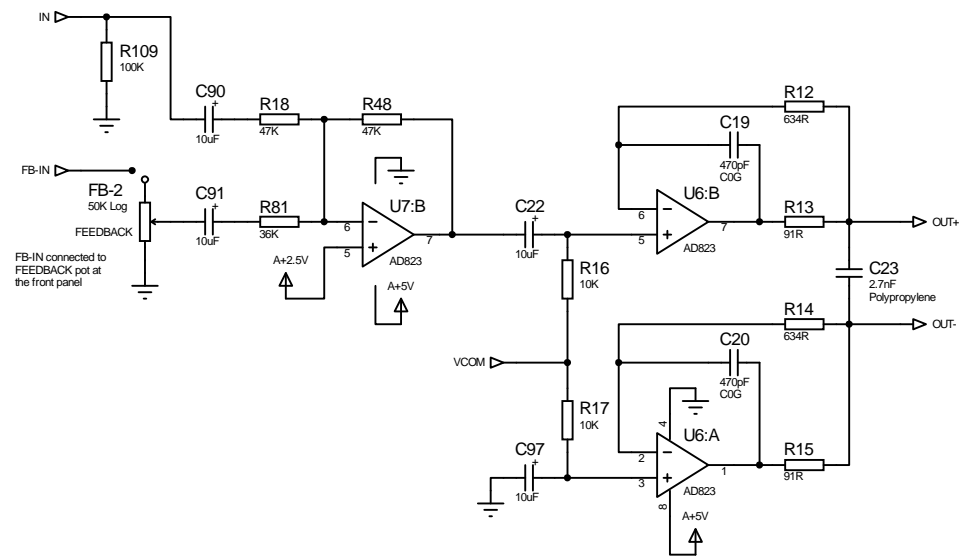
4xD - ANALOG INPUT BUFFER



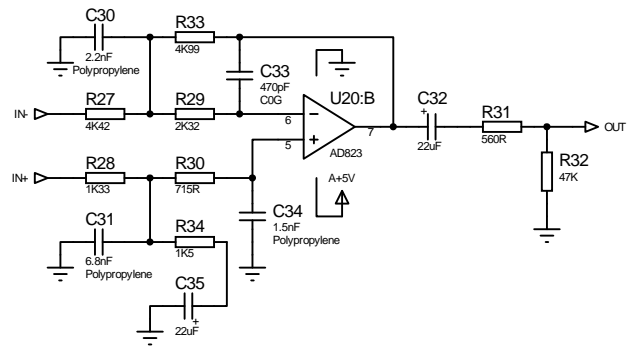
4xD - INPUT BUFFER



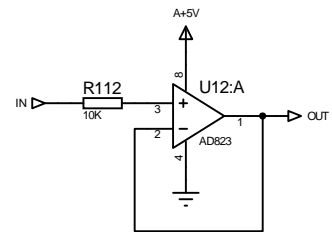
4xD - OUTPUT BUFFER



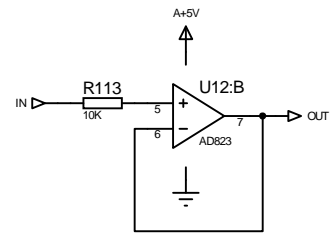
4xD - INPUT BUFFER



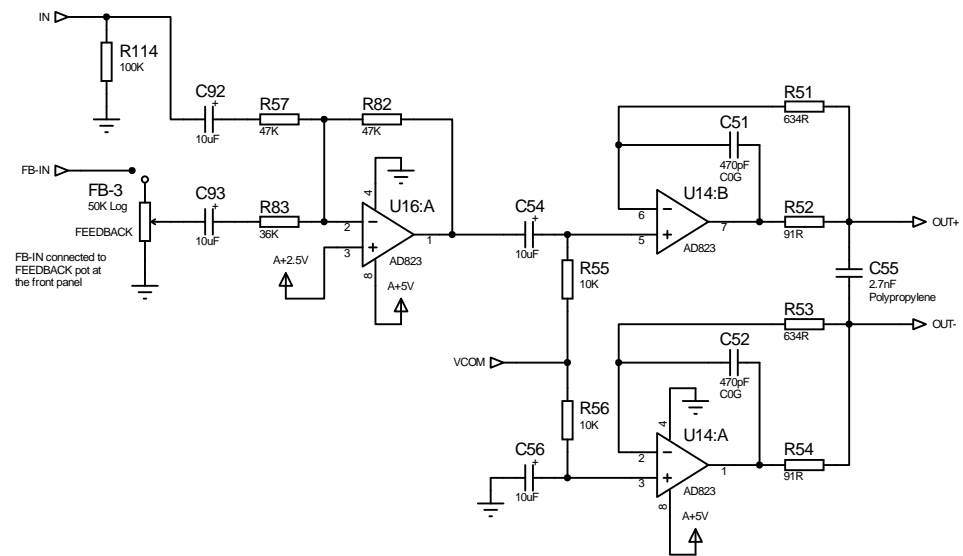
4xD - OUTPUT BUFFER



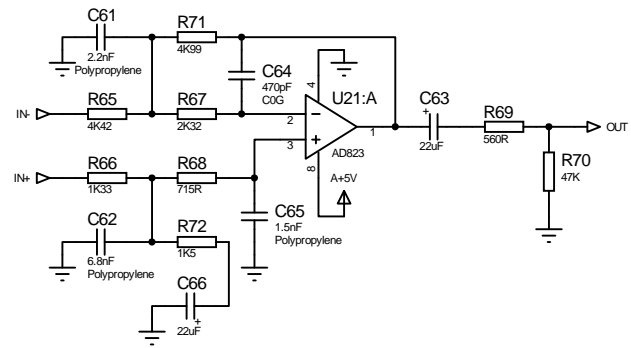
4xD - ANALOG INPUT BUFFER



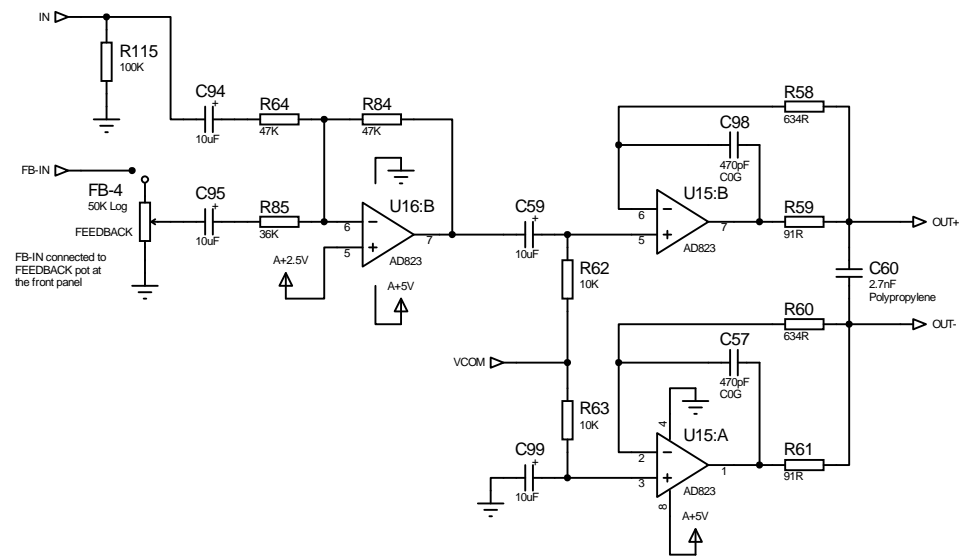
4xD - ANALOG INPUT BUFFER



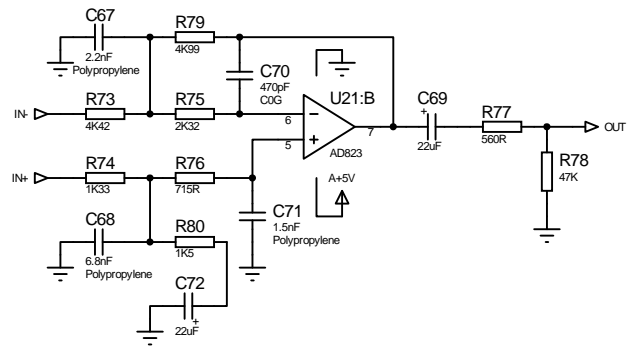
4xD - INPUT BUFFER



4xD - OUTPUT BUFFER



4xD - INPUT BUFFER



4xD - OUTPUT BUFFER